

Product Brief



AT&T Managed Internet Service®

The Internet is used for many critical operations – electronic commerce, e-mail, remote access productivity and much more. AT&T Managed Internet Service® (MIS) allows for high speed, dedicated Internet access with the features needed to stay connected to customers, business partners and employees. AT&T MIS is no ordinary Internet connection. It provides reliability, optimal performance, scalability and business security features from one of the world's leading service providers.

High Speed Internet Access and Options That Fit

AT&T MIS provides a dedicated Internet connection, with extensive reach throughout the United States (including Puerto Rico and U.S. Virgin Islands), for businesses 24 hours a day. Select the complete AT&T managed solution or choose to manage certain components by providing your own equipment. Either way, AT&T proactively monitors the Internet access around the clock and provides enhanced features to help protect critical business applications.

AT&T MIS offers flexibility with a wide range of fast symmetrical access speeds. Access methods and options are:

- Access Speeds: T1 – 100 Mbps*
- Access Types: Ethernet and Private Line
- Service Components: Customer Premises Equipment (router, modem and CSU/DSU), Hardware Management, Monitoring and Maintenance, Primary and Secondary IP Addresses, Packet Filtering, Usage Reports, Local Access, Electronic Servicing Capabilities
- Options: Business Voice Applications, Usage-Based Billing, Class of Service, Security Solutions, Managed Redundancy Options

End-to-End Management as Needed

More than just an Internet connection, AT&T Managed Internet Service® is a complete access and technical solution. Gain the quality and performance needed to conduct business over the Internet with confidence.

AT&T MIS gives the convenience, responsiveness and options for rapidly growing Internet use. Take advantage of managed, high speed, end-to-end Internet connectivity, with peace of mind knowing AT&T is there with proactive monitoring and technical assistance. Feel comfortable knowing you made the right choice for your Internet needs.

Potential Benefits

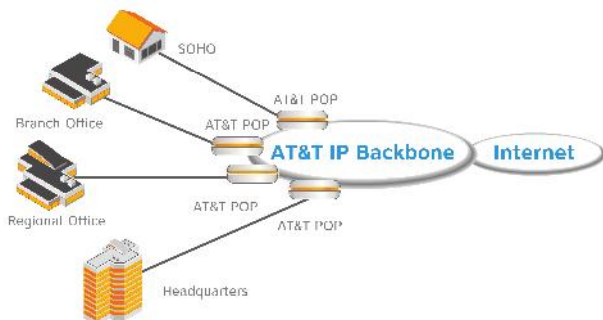
- Connection to the Internet is dedicated, not shared with other businesses
- Backed by industry-leading Service Level Agreements: service availability of 100%, data delivery of 99.95%, and roundtrip latency of 37ms (U.S. domestic)
- 24x7x365 technical support and proactive monitoring assures continuous end-to-end availability
- 24x7x365 maintenance option
- Wide range of access speeds and bundled options like VoIP and Managed Security Services

Features

- Access Speeds from T1 - 100 Mbps*
- Ethernet and Private Line
- AT&T provided and managed equipment (router, modem and CSU/DSU) with installation options or customer provided

*Some speeds may not be available in all areas

Extensive Access...



...From An Innovative Service Provider

- Fast, Symmetrical Connection
- Guaranteed Provisioning
- 24x7x365 Technical Support
- 40Gb National IP Backbone
- Highly Redundant Network Switches and Nodes for unparalleled reliability



Powered by



Seamless Connectivity Enables Business Flexibility.



Businesses today are experiencing the enormous productivity boost that mobile wireless Internet delivers. AT&T Mobile Data extends business practically anywhere, enabling a workforce on the go to stay in touch with the office, customers, and business partners. AT&T Mobile Hotspots, USB LaptopConnect connect cards, and smartphones enable a seamless wireless workflow, with the reliability and connectivity that only a complete business-class solution can provide.

Extend the mobile office

Whether on a business trip or on the road with family, AT&T Mobile Data gives users the flexibility and control needed to stay connected and keep information flowing. Send and receive data in real-time, transfer large emails while mobile, and expedite processes by giving users access to corporate applications and databases. AT&T Mobile Hotspots allow the sharing of mobile broadband connections with multiple Wi-Fi enabled devices – including laptops, tablets, cameras, e-readers, and other multimedia devices – in the car, at the airport, or virtually anywhere.

Security and reliability

When it comes to wireless connections, protecting data is essential. AT&T Mobile Data leverages the highly reliable, redundant, and secure AT&T global network, and most reliable 4G LTE network.

Deliver true agility

As part of AT&T Mobile Data, standalone Mobile Hotspot devices let users share connections conveniently and easily. Mobile Hotspot is also available on select AT&T smartphones running (or upgradable to) iOS 4.3 or higher, Android™ 2.2 or higher, or Windows® Phone 7.5 or higher. AT&T USB LaptopConnect cards, compatible with most Windows-based systems, provides the connectivity, and roaming flexibility that today's telecommuting workforce demands.

AT&T Partner ExchangeSM
Solution Provider



Reliability claim based on data transfer completion rates on nationwide 4G LTE networks. LTE is a trademark of ETSI. 4G LTE not available everywhere.